



ALPS ROAD :: 4th Grade

M4M2. Students will understand the concept of angles and how to measure them.

- a. Use tools, such as a protractor or angle ruler, and other methods such as paper folding, drawing a diagonal in a square, to measure angles.
- b. Understand the meaning and measure of a half rotation and a full rotation.
- c. Determine that the sum of the three angles of a triangle is

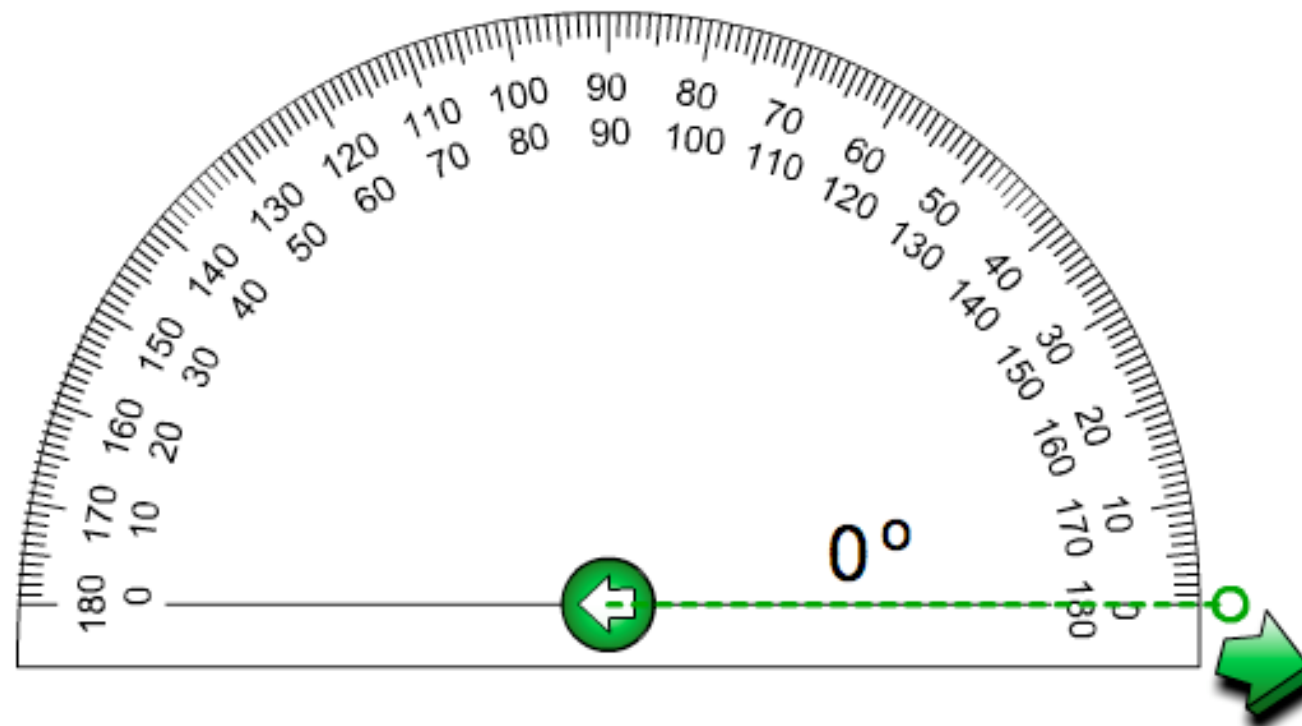
E.Q. What is true of all triangles?

E.Q. What is true of all triangles?



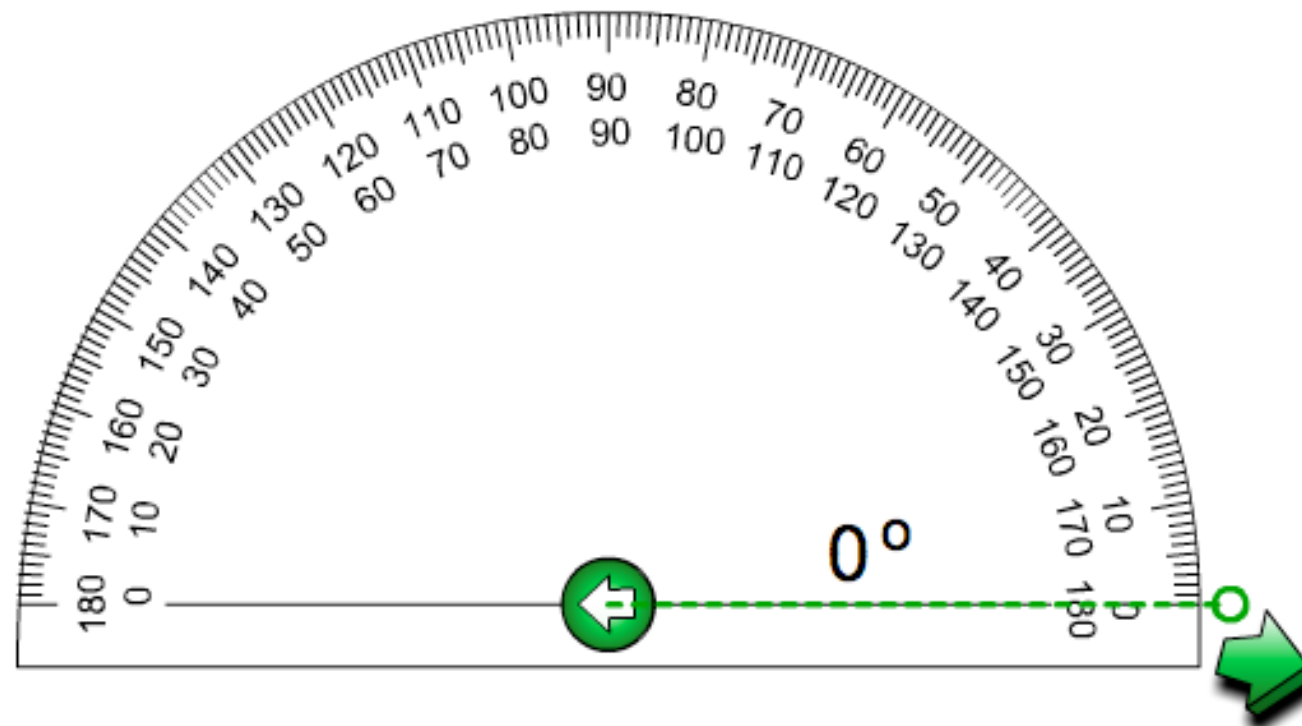
E.Q. What is true of all triangles?

MEASURING ANGLES



E.Q. What is true of all triangles?

180° ANGLES



E.Q. What is true of all triangles?

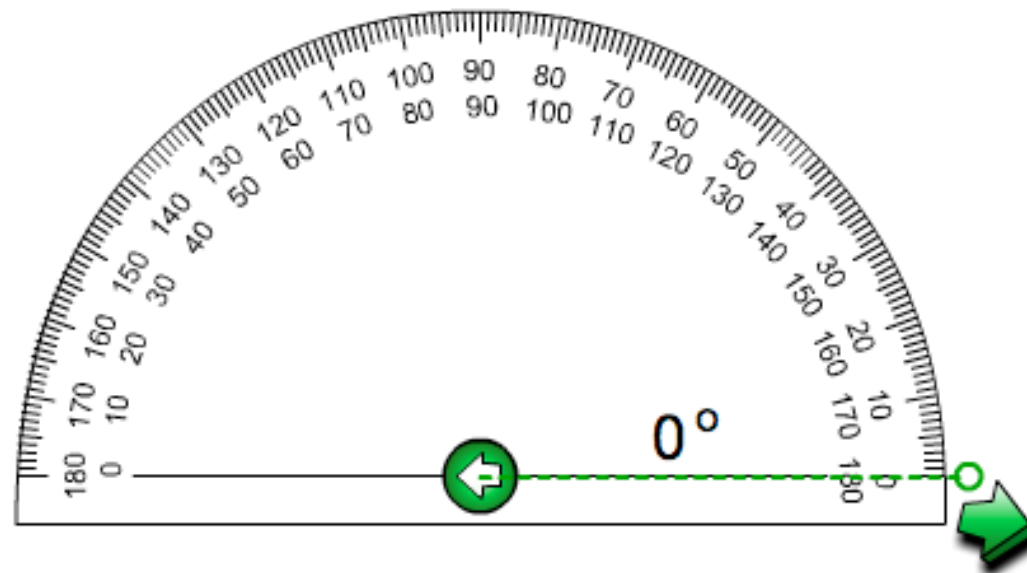
Picture 180° ANGLES



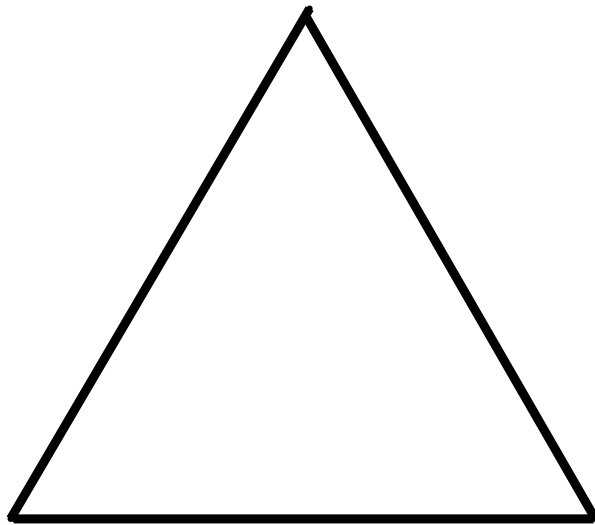
E.Q. What is true of all triangles?

M4M2.

c. Determine that the **sum** of the three angles of a triangle...



E.Q. What is true of all triangles?



You'll get two bags of triangles. One bag has triangles you'll cut; the other triangles should stay whole.

1. Mark your angles with markers.
2. Cut off the angles of your triangle. Cut close to the line.
3. Glue them down next so that they're touching. Glue down the matching whole triangle above it.

Do you have all of your triangles completed? What do you think is true of all triangles?

ALPS ROAD :: 4th Grade

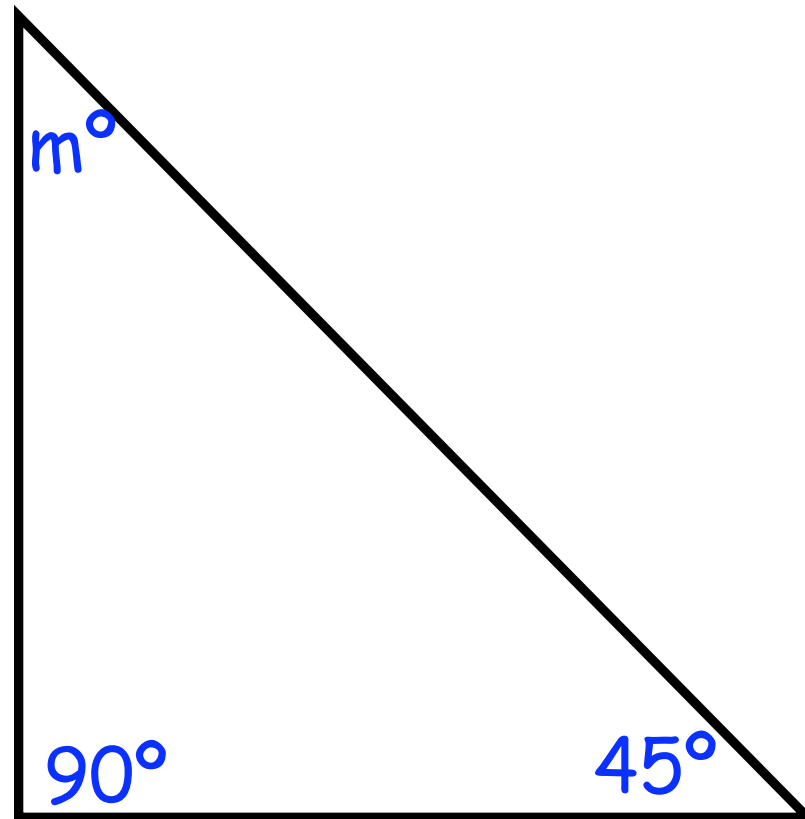
M4M2. Students will understand the concept of angles and how to measure them.

- a. Use tools, such as a protractor or angle ruler, and other methods such as paper folding, drawing a diagonal in a square, to measure angles.
- b. Understand the meaning and measure of a half rotation and a full rotation.
- c. Determine that the sum of the three angles of a triangle is [REDACTED]

E.Q. What is true of all triangles?

E.Q. What is true of all triangles?

TICKET OUT THE DOOR: What does angle m equal?



E.Q. What is true of all triangles?